

变频器专用电源滤波器

量安电气

特点及应用

- 此产品是基于变频器工作时输入端对电网及其他数字设备产生干扰的频段特性专门设计
- 优异的共模和差模抑制能力，可有效抑制变频器产生的传导干扰
- 多种连接方式可供选择，可选带灭护罩或端子台产品
- 适用于对环境要求严格的工作现场
- 安规认证：CE

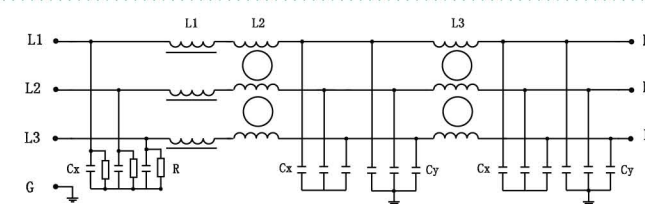
技术指标

额定电压	250/440VAC		额定电流@40°C	0.5A~1600A
测试电压	相-相	2250VDC	气候类别	25/085/21
	相-地	2700VDC	工作频率	50/60Hz

产品列表

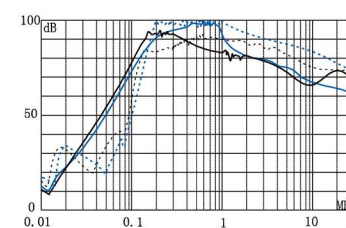
产品型号	额定电流 @40°C	泄漏电流 250VAC/50Hz @20°C	变频器功率 (KVA)	外形尺寸	连接方式		重量(g)
							
LA330-6	6A	<7.5mA	1.5	Fig.1	M4	----	1450
LA330-10	10A	<7.5mA	3.0	Fig.1	M4	----	1450
LA330-15	15A	<7.5mA	5.5	Fig.1	M4	----	1500
LA330-20	20A	<7.5mA	7.5	Fig.1	M4	----	1500
LA330-25	25A	<7.5mA	11.0	Fig.2	M6	----	3100
LA330-30	30A	<7.5mA	15.0	Fig.2	M6	----	3100
LA330-40	40A	<13.0mA	18.5	Fig.2	M6	----	3300
LA330-50	50A	<13.0mA	22.0	Fig.2	M6	----	3600
LA330-60	60A	<13.0mA	30.0	Fig.2	M6	----	3600
LA330-80	80A	<40.0mA	37.0	Fig.3	M8	----	6600
LA330-100	100A	<40.0mA	45.0	Fig.3	M8	----	6630
LA330-120	120A	<40.0mA	55.0	Fig.3	M8	----	6650
LA330-150	150A	<50.0mA	75.0	Fig.3	M10	----	6950
LA330-200	200A	<50.0mA	95.0	Fig.4	M10	----	11000
LA330-300	300A	<45.0mA	110/132	Fig.5	----	○	14000
LA330-400	400A	<45.0mA	160	Fig.5	----	○	14000
LA330-500	500A	<60.0mA	200	Fig.6	----	○	18000
LA330-630	630A	<60.0mA	315	Fig.6	----	○	18000
LA330-800	800A	<90.0mA	375	Fig.6	----	○	21700
LA330-1000	1000A	<90.0mA	450	Fig.6	----	○	21700

电路原理图

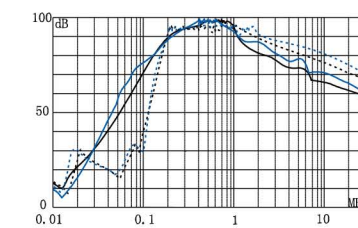


插入损耗(dB)

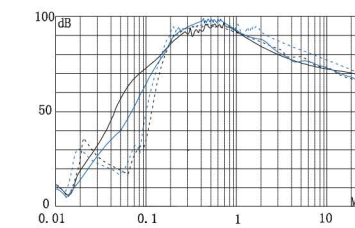
— 共模 ——— 差模



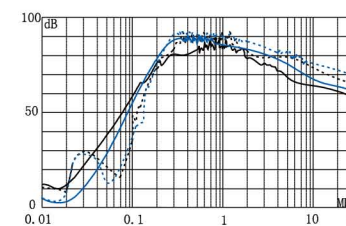
LA330-6 LA330-10



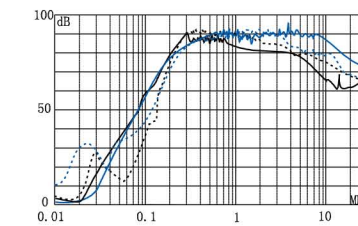
LA330-15 LA330-20



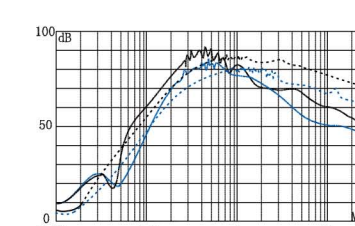
LA330-25 LA330-30



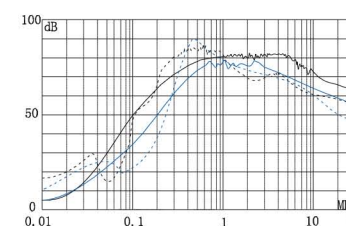
LA330-40 LA330-50



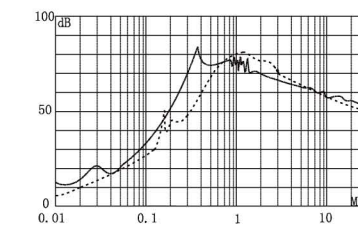
LA330-65 LA330-80



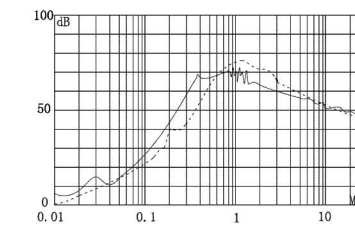
LA330-100 LA330-120



LA330-150 LA330-200



LA330-300 BT8301-400



LA330-500/630 LA330-800/1000

外形尺寸(mm)

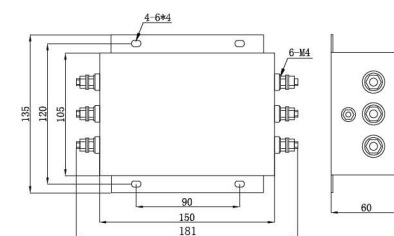


Fig. 1

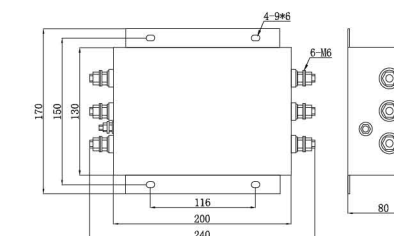


Fig. 2

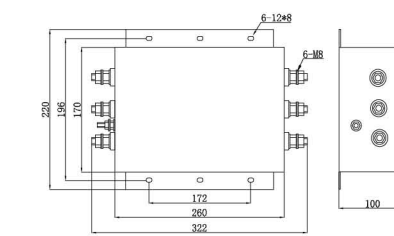


Fig. 3

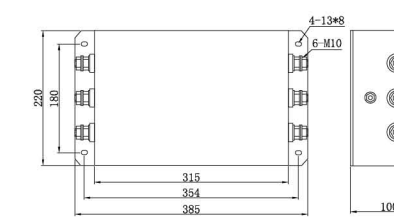


Fig. 4

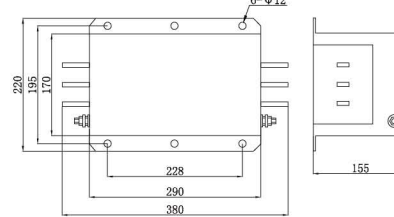


Fig. 5

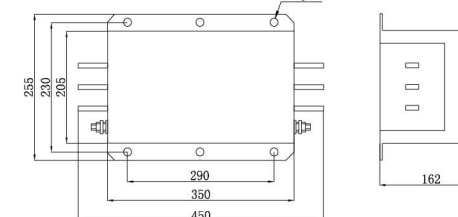


Fig. 6