


交流单相电源滤波器

量安电气

电路原理图

特点及应用

- 安全可靠，高性能型电源滤波器
- 在10KHz~30MHz宽范围内拥有优异的共模、差模滤波效果
- 高性价比，多种连接方式可供选择
- 适用于开关电源、UPS、ATM、点钞机、绣花机、加油机、雕刻机、控制器、工业计算机、科学分析仪器等电力电子设备及变频设备
- 可选医疗设备专用
- 安规认证: 


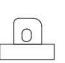
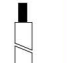
LA130 系列

ROHS

技术指标

额定电压	110/250VAC		额定电流@40°C	0.5A~1600A
测试电压	相-相	1760VDC	气候类别	25/085/21
	相-地	2000VAC	工作频率	50/60Hz

产品列表

产品型号	额定电流 @40°C	泄漏电流 250VAC/50Hz @20°C	外形尺寸	电路原理图	连接方式			重量 (g)
								
LA130-1	1A	<1.5mA	Fig.1	Fig.1	---	---	○	95
LA130-3	3A	<1.5mA	Fig.2	Fig.1	---	○	---	145
LA130-6	6A	<1.5mA	Fig.3	Fig.1	M4	---	---	450
LA130-10	10A	<2.5mA	Fig.3	Fig.1	M4	---	---	550
LA130-20	20A	<2.5mA	Fig.3	Fig.1	M4	---	---	550
LA130-50	50A	<2.5mA	Fig.4	Fig.1	M6	---	---	3300

★ 医疗设备专用 泄漏电流在 250VAC/50Hz@20°C 下小于2μA

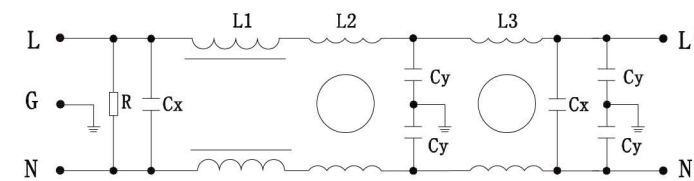
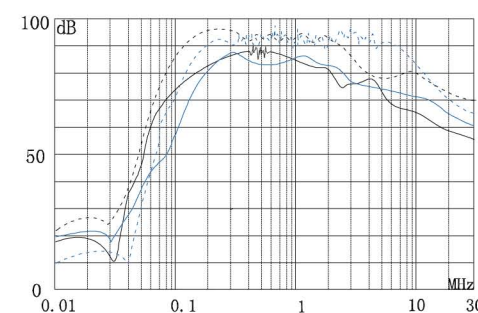


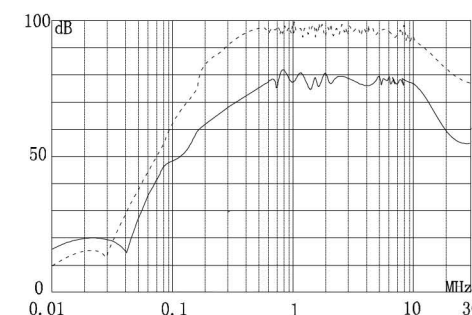
Fig.1

插入损耗(dB)

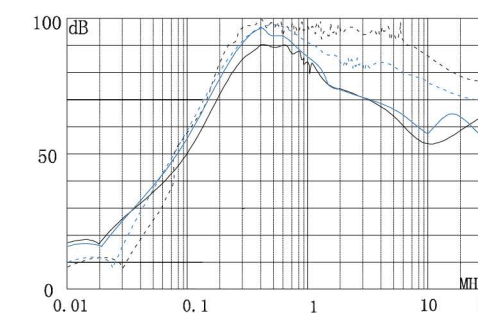
— 共模 --- 差模



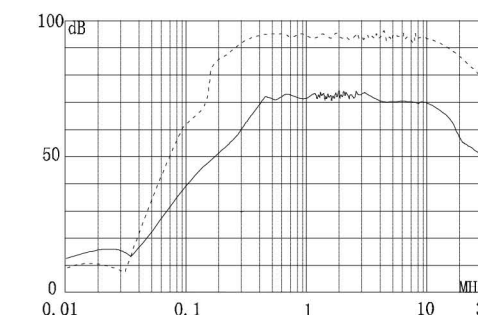
LA130-1 LA130-3



LA130-20



LA130-6 LA130-10



LA130-50

外形尺寸(mm)

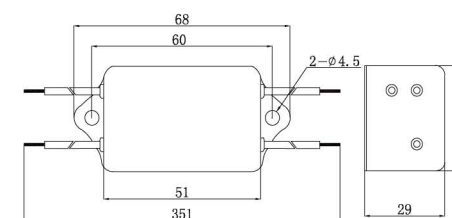


Fig.1

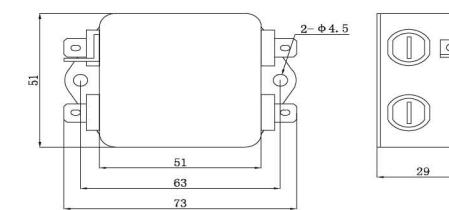


Fig.2

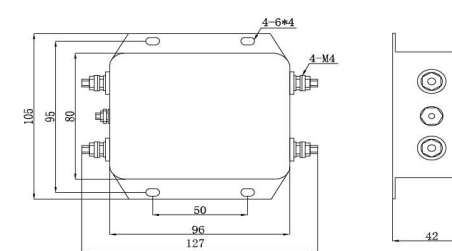


Fig.3

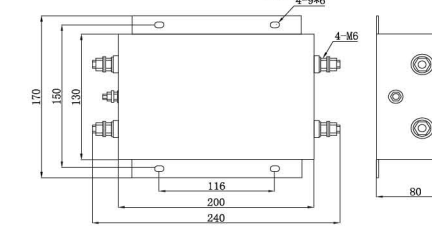


Fig.4