

交流单相电源滤波器

量安电气

特点及应用

- 安全可靠，高性能型电源滤波器
- 对差模干扰和共模干扰具有优异的抑制能力
- 高性价比，多种连接方式可供选择
- 适用于开关电源、UPS、ATM、点钞机、绣花机、加油机、雕刻机、控制器、工业计算机、科学分析仪器等电力电子设备及变频设备
- 可选医疗设备专用
- 安规认证：CE

LA120 /LA121 /LA1200 系列
ROHS

技术指标

额定电压	110/250VAC		额定电流@40°C	0.5A~250A
测试电压	相-相	1760VDC	气候类别	25/085/21
	相-地	2000VAC	工作频率	50/60Hz

产品列表

产品型号	额定电流 @40°C	泄漏电流 250VAC/50Hz @20°C	外形尺寸	电路原理图	连接方式			重量(g)
LA120-1	1A	<0.5mA	Fig.2	Fig.1	---	---	○	95
LA120-3	3A	<0.5mA	Fig.2	Fig.1	---	---	○	95
LA120-6	6A	<0.5mA	Fig.2	Fig.1	---	---	○	95
LA120-10	10A	<1.0mA	Fig.3	Fig.1	---	○	---	170
LA121-6	6A	<1.0mA	Fig.3	Fig.2	M4	○	---	170
LA121-10	10A	<1.0mA	Fig.3	Fig.2	M4	○	---	170
LA121-20	20A	<1.0mA	Fig.4	Fig.2	M4	○	---	320
LA121-50	50A	<2.0mA	Fig.6	Fig.2	M6	---	---	1400
LA121-100	100A	<2.0mA	Fig.7	Fig.2	M8	---	---	2000
LA121-200	200A	<2.0mA	Fig.7	Fig.2	M10	---	---	3000
LA1200-1	1A	<0.5mA	Fig.1	Fig.3	---	---	○	65
LA1200-3	3A	<0.5mA	Fig.2	Fig.3	---	---	○	95
LA1200-6	6A	<1.0mA	Fig.3	Fig.3	M4	○	---	175
LA1200-10	10A	<1.0mA	Fig.3	Fig.3	M4	○	---	175
LA1200-20	20A	<1.0mA	Fig.5	Fig.3	M4	---	---	600
LA1200-50	50A	<2.0mA	Fig.6	Fig.3	M6	---	---	1600

★ 医疗设备专用 泄漏电流在 250VAC/50Hz@20°C 下小于2μA

电路原理图

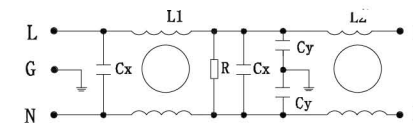


Fig.1

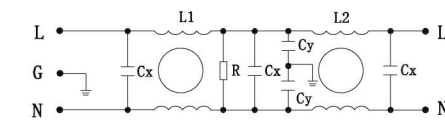


Fig.2

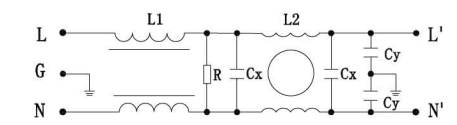
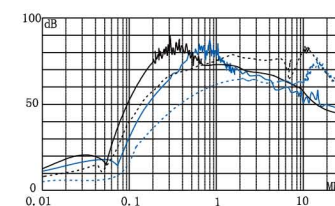


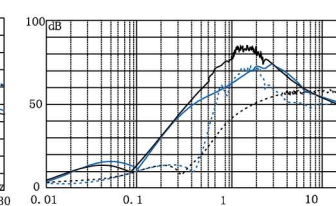
Fig.3

插入损耗(dB)

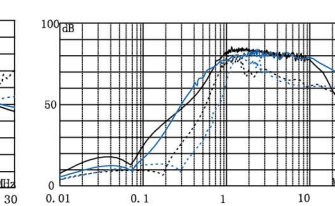
— 共模 --- 差模



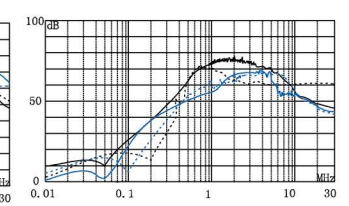
LA120-1 LA120-3



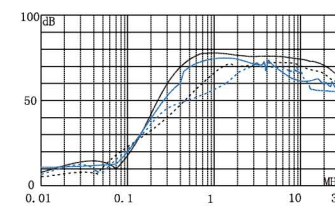
LA120-6 LA120-10



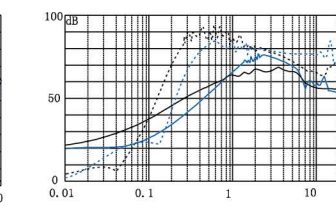
LA121-6 LA121-10



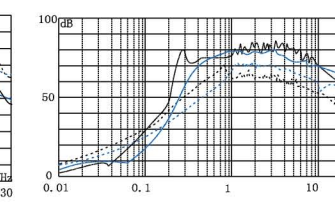
LA121-20 LA121-50



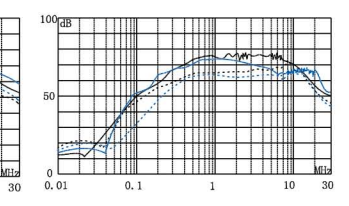
LA121-100 LA121-200



LA1200-1 LA1200-3



LA1200-6 LA1200-10



LA1200-20 LA1200-50

外形尺寸(mm)

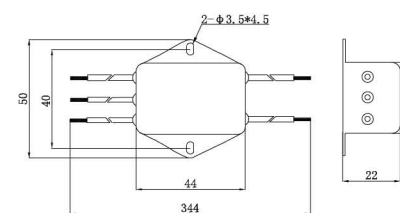


Fig.1

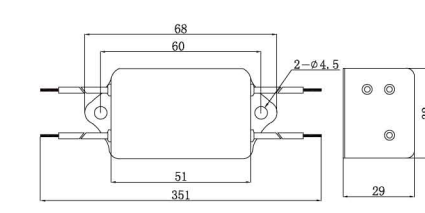


Fig.2

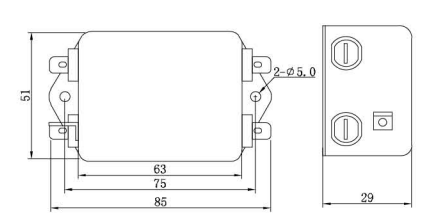


Fig.3

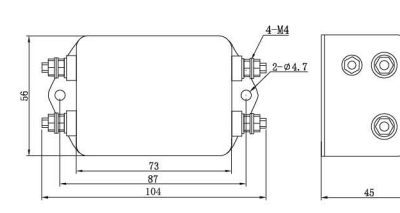


Fig.4

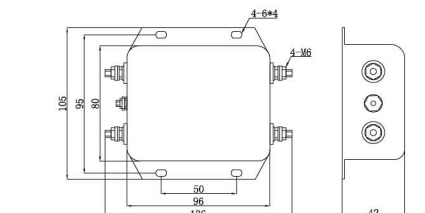


Fig.5

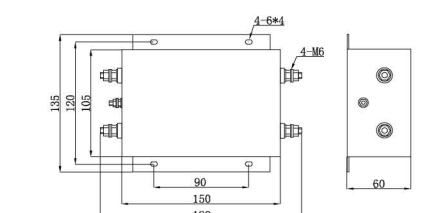


Fig.6

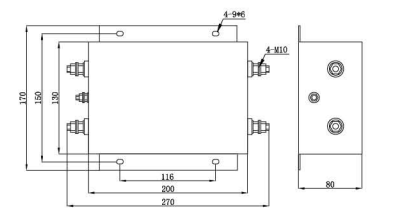


Fig.7