

PCB板专用滤波器

量安电气

特点及应用

- 有效滤除线与线、线与地之间的噪声干扰
- 塑料、金属外壳，专为PCB板设计
- 外形小巧，结构紧凑，便于安装，高性价比
- 适用于交换机、报警器、控制器、LCD、卫星电视系统等超小型设备

- 可选医疗设备专用
- 安规认证: **CE**

技术指标

额定电压	110/250VAC		额定电流@40°C	0.5A~6A
测试电压	相-相	1500VDC	气候类别	25/085/21
	相-地	1500VAC	工作频率	50/60Hz

交流PCB板专用
RoHS

产品列表

产品型号	额定电流 @40°C	泄漏电流 250VAC/50Hz @20°C	外形尺寸	电路原理图	连接方式	重量 (g)
LA110P-0.5	0.5A	<0.5mA	Fig.1	Fig.1	┃	35
LA110P-1	1A	<0.5mA	Fig.1	Fig.1	┃	35
LA110P-3	3A	<0.5mA	Fig.1	Fig.1	┃	35
LA110P-6	6A	<0.5mA	Fig.1	Fig.1	┃	35
LA120P-1	1A	<0.5mA	Fig.2	Fig.2	┃	40
LA120P-3	3A	<0.5mA	Fig.2	Fig.2	┃	40
LA1200P-1	1A	<0.5mA	Fig.3	Fig.3	┃	75
LA1200P-3	3A	<0.5mA	Fig.3	Fig.3	┃	75

★ 医疗设备专用 泄漏电流在 250VAC/50Hz@20°C 下小于2μA

电路原理图

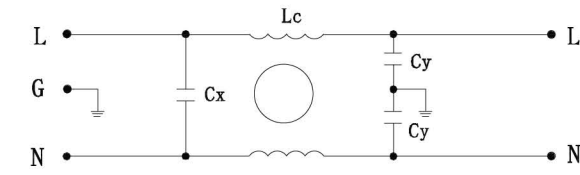


Fig. 1

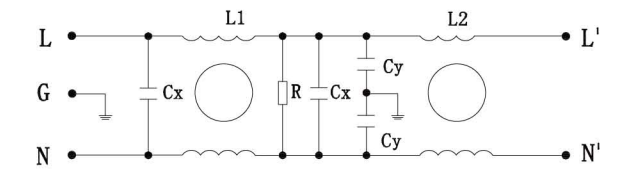


Fig. 2

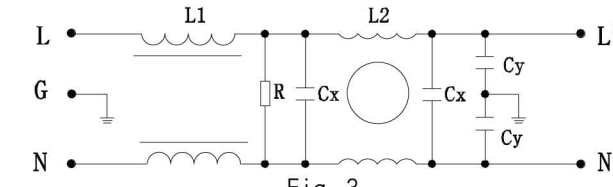
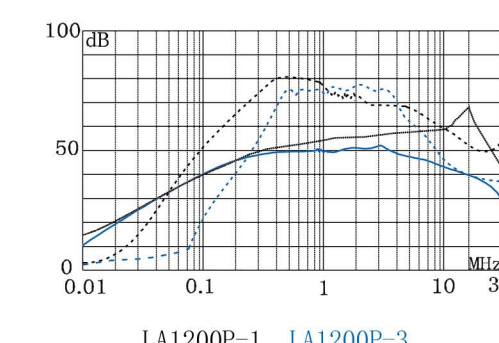
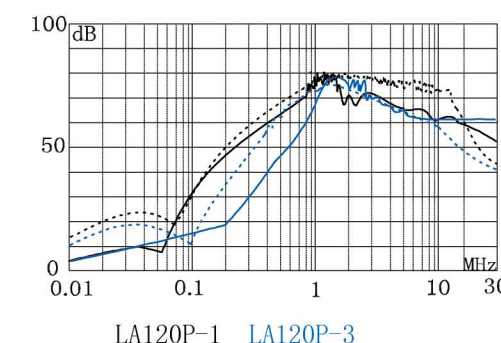
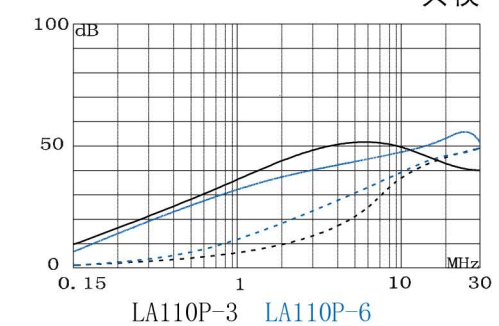
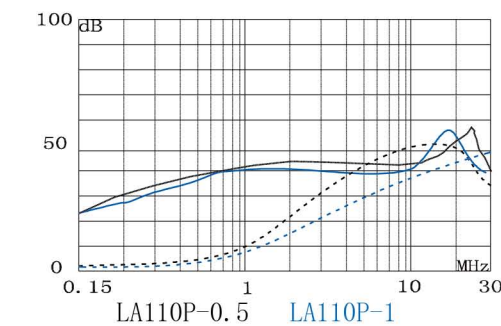


Fig. 3

插入损耗(dB)

— 共模 --- 差模



外形尺寸(mm)

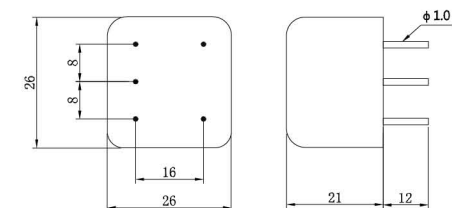


Fig. 1

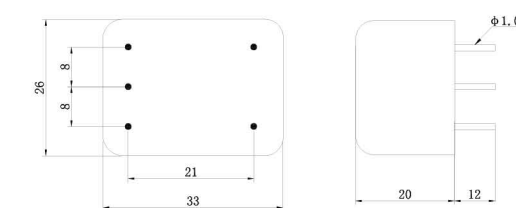


Fig. 2

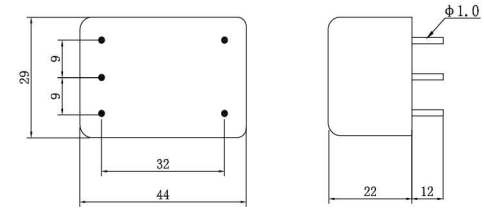


Fig. 3