

PCB板专用滤波器

量安电气

电路原理图

特点及应用

- 直流滤波器，有效滤除线与线、线与地之间的噪声干扰
- 塑料、金属外壳，专为PCB板设计
- 外形小巧，结构紧凑，便于安装，高性价比
- 适用于直流供电的小型电子设备
- 安规认证：**CE**

直流PCB板专用

RoHS

技术指标

额定电压	0~250VDC	额定电流@40°C	0.5A~6A
工作频率	DC	气候类别	25/085/21

产品列表

产品型号	额定电流 @40°C	外形尺寸	电路原理图	连接方式	重量 (g)
LA110PD-0.5	0.5A	Fig.1	Fig.1	丨	35
LA110PD-1	1A	Fig.1	Fig.1	丨	35
LA110PD-3	3A	Fig.1	Fig.1	丨	35
LA110PD-6	6A	Fig.1	Fig.1	丨	35
LA120PD-1	1A	Fig.2	Fig.2	丨	40
LA120PD-3	3A	Fig.2	Fig.2	丨	40
LA1200PD-1	1A	Fig.3	Fig.3	丨	75
LA1200PD-3	3A	Fig.3	Fig.3	丨	75

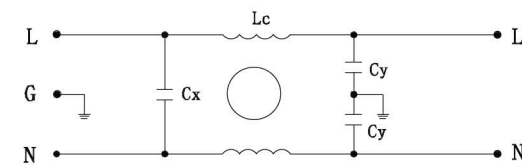


Fig. 1

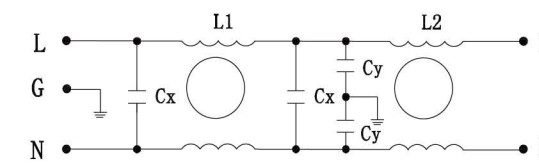


Fig. 2

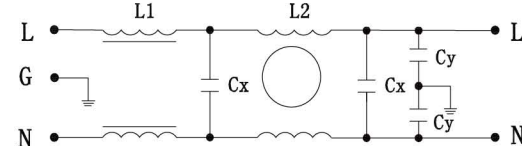
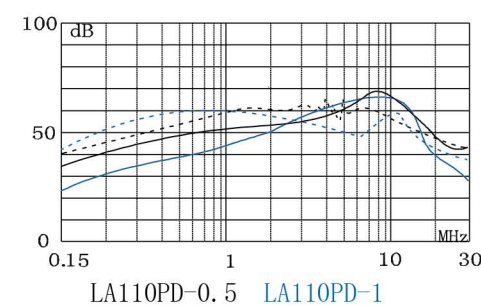


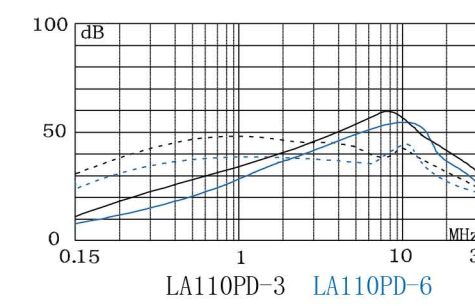
Fig. 3

插入损耗(dB)

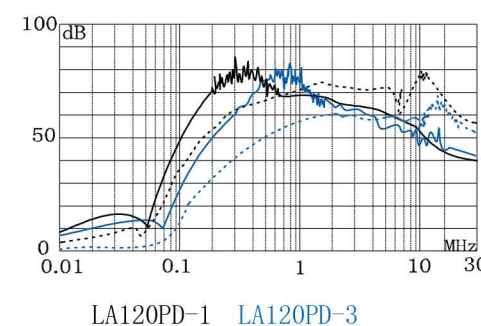
— 共模 --- 差模



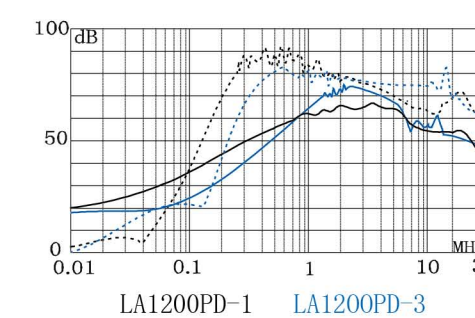
LA110PD-0.5 LA110PD-1



LA110PD-3 LA110PD-6



LA120PD-1 LA120PD-3



LA1200PD-1 LA1200PD-3

外形尺寸(mm)

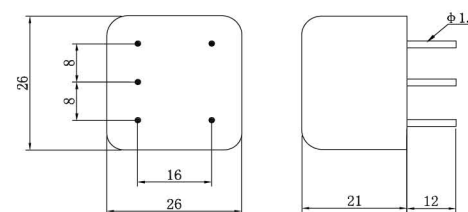


Fig. 1

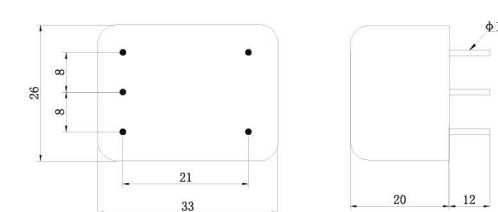


Fig. 2

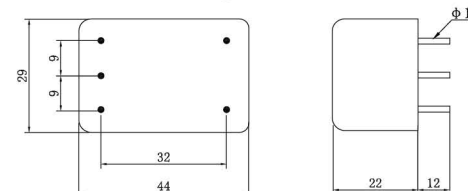


Fig. 3